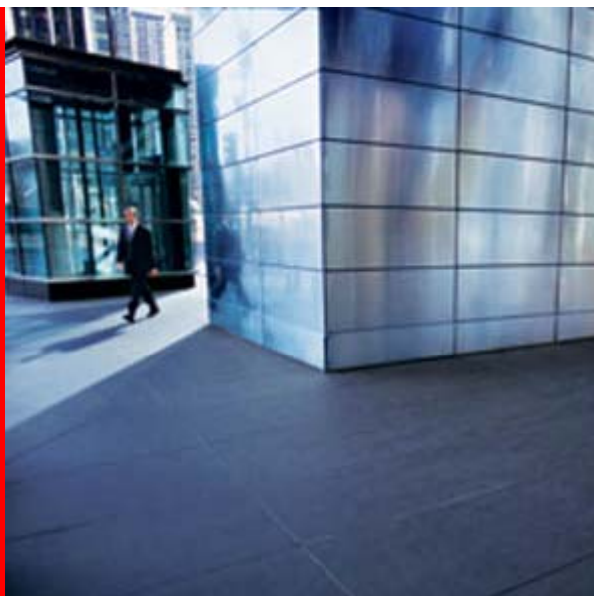


The following is intended to outline Oracle's general product direction. It is intended for information purposes only, and may not be incorporated into any contract. It is not a commitment to deliver any material, code, or functionality, and should not be relied upon in making purchasing decisions. The development, release, and timing of any features or functionality described for Oracle's products remains at the sole discretion of Oracle.

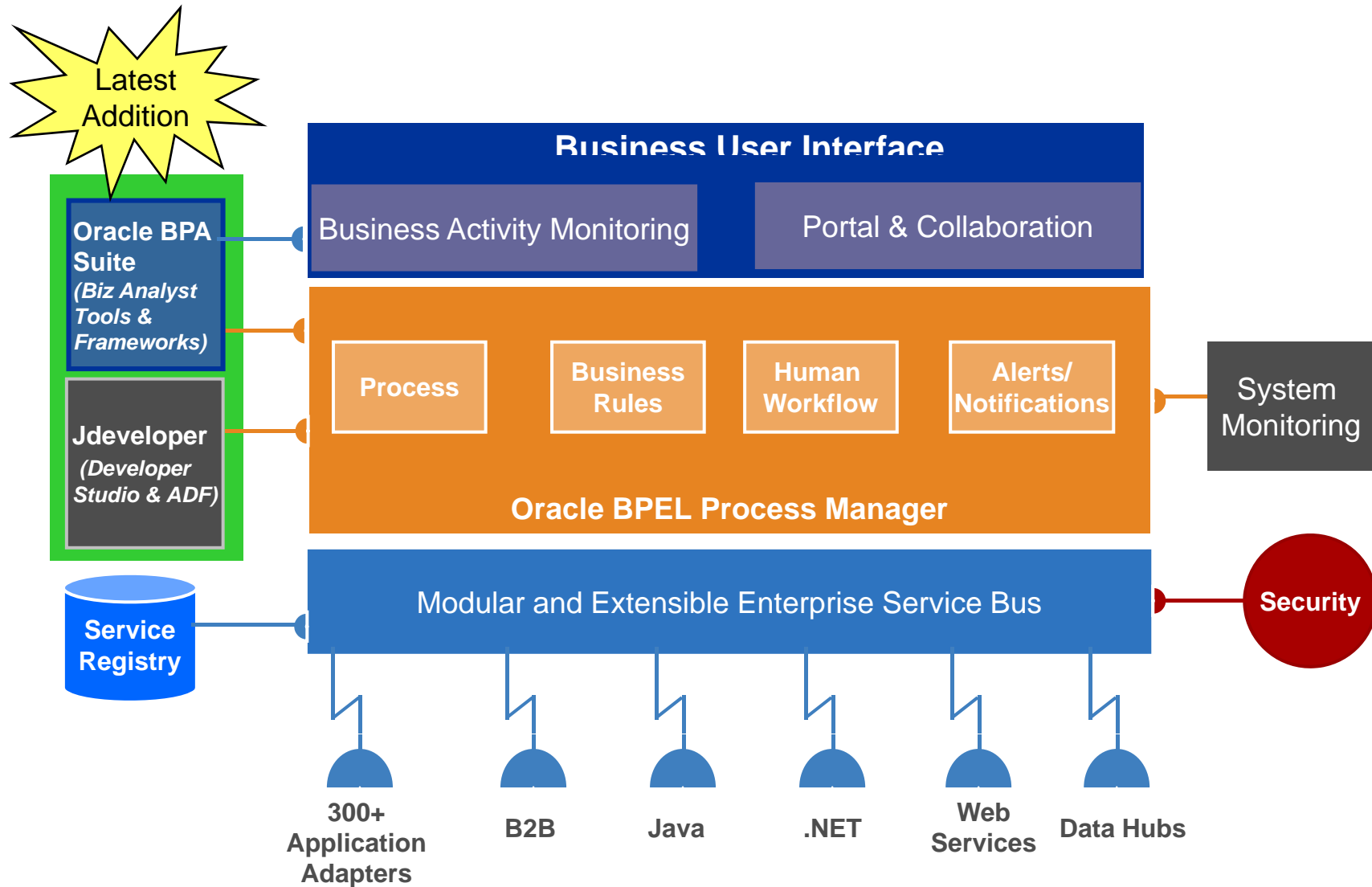


ORACLE®

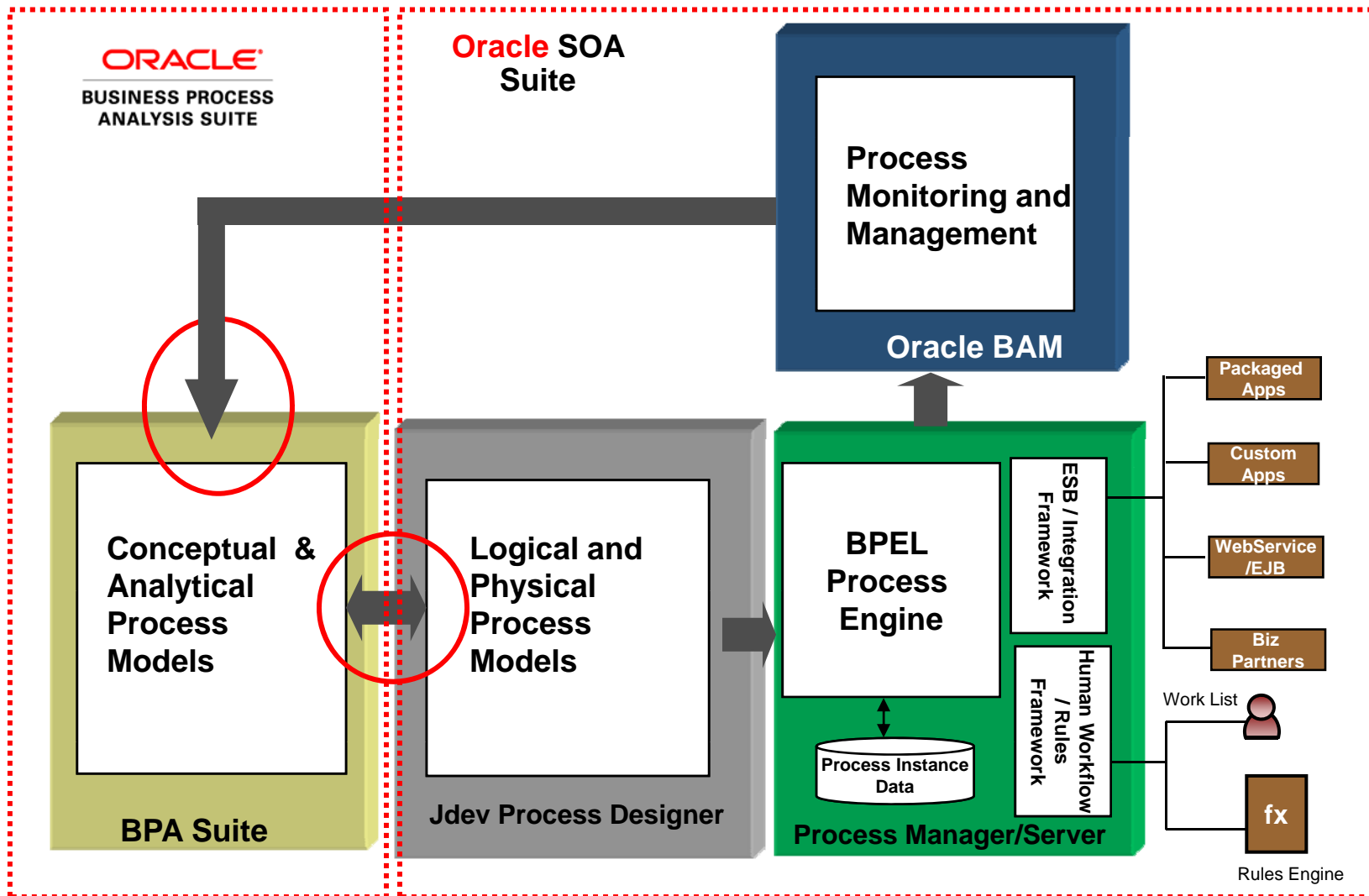
Oracle BPA Suite

Conceptual Overview of Business and Tech Model Interchange

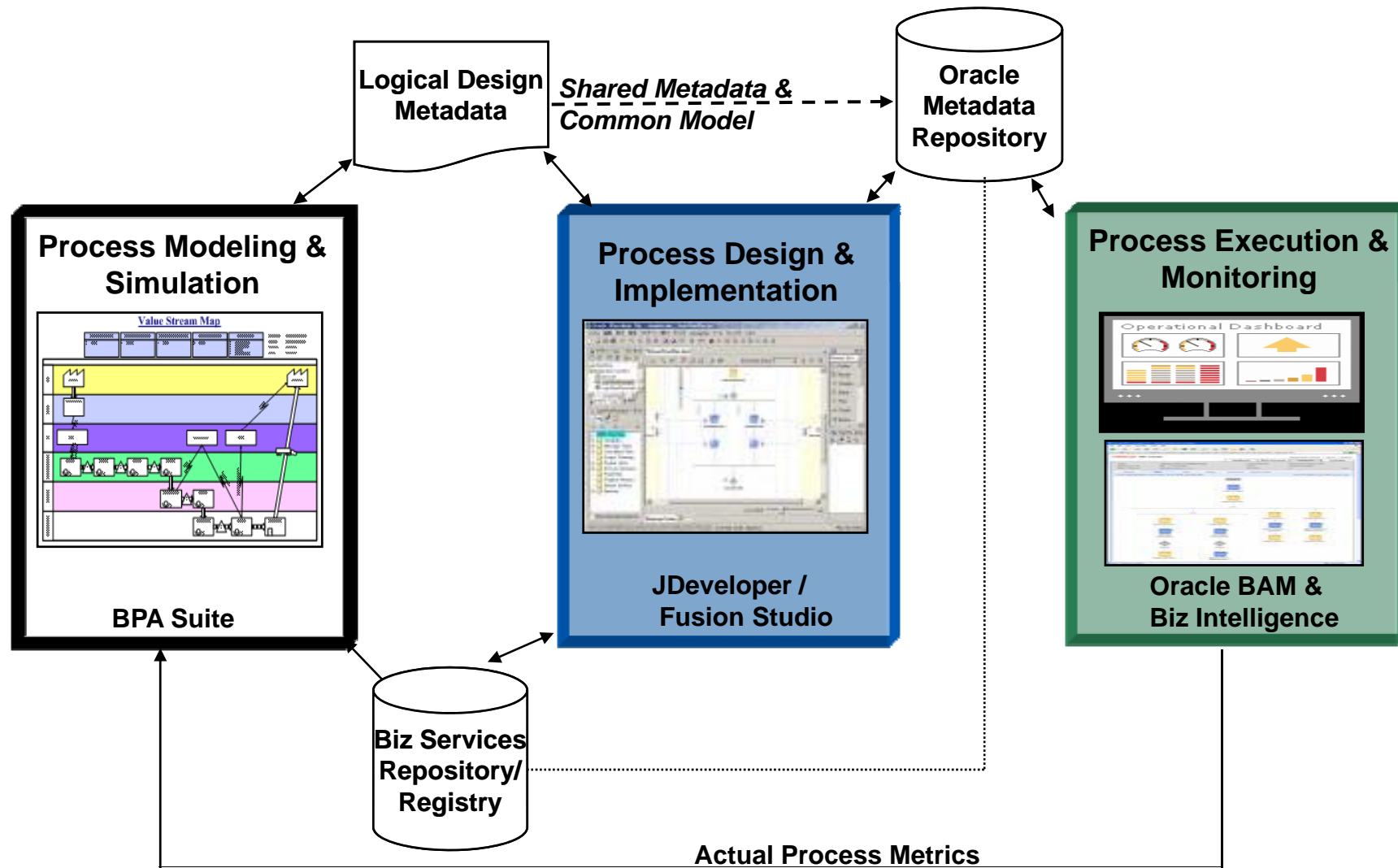
Oracle BPM Solution



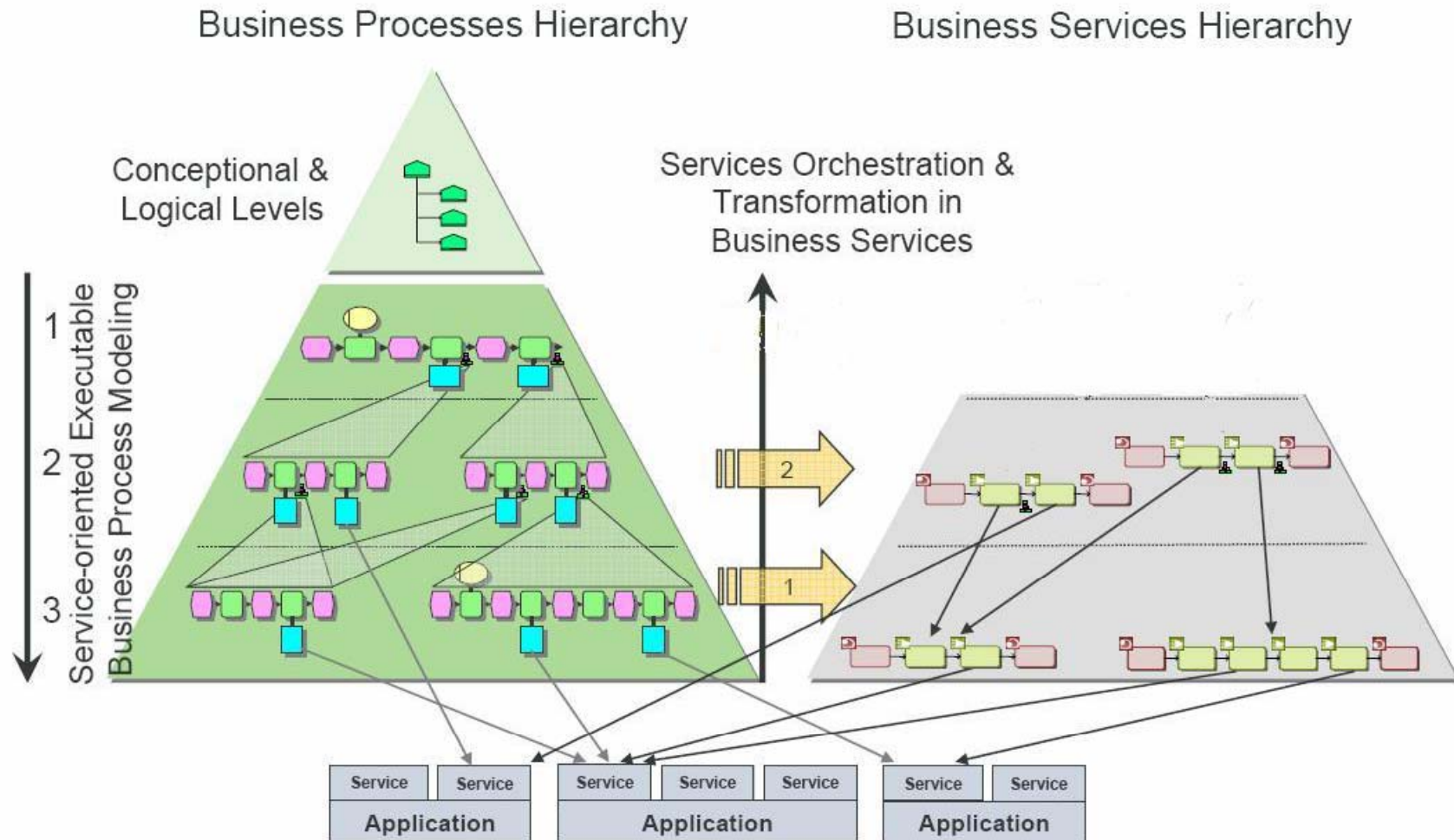
Integration Philosophy for Closed Loop BPM



High Level Technical Architecture

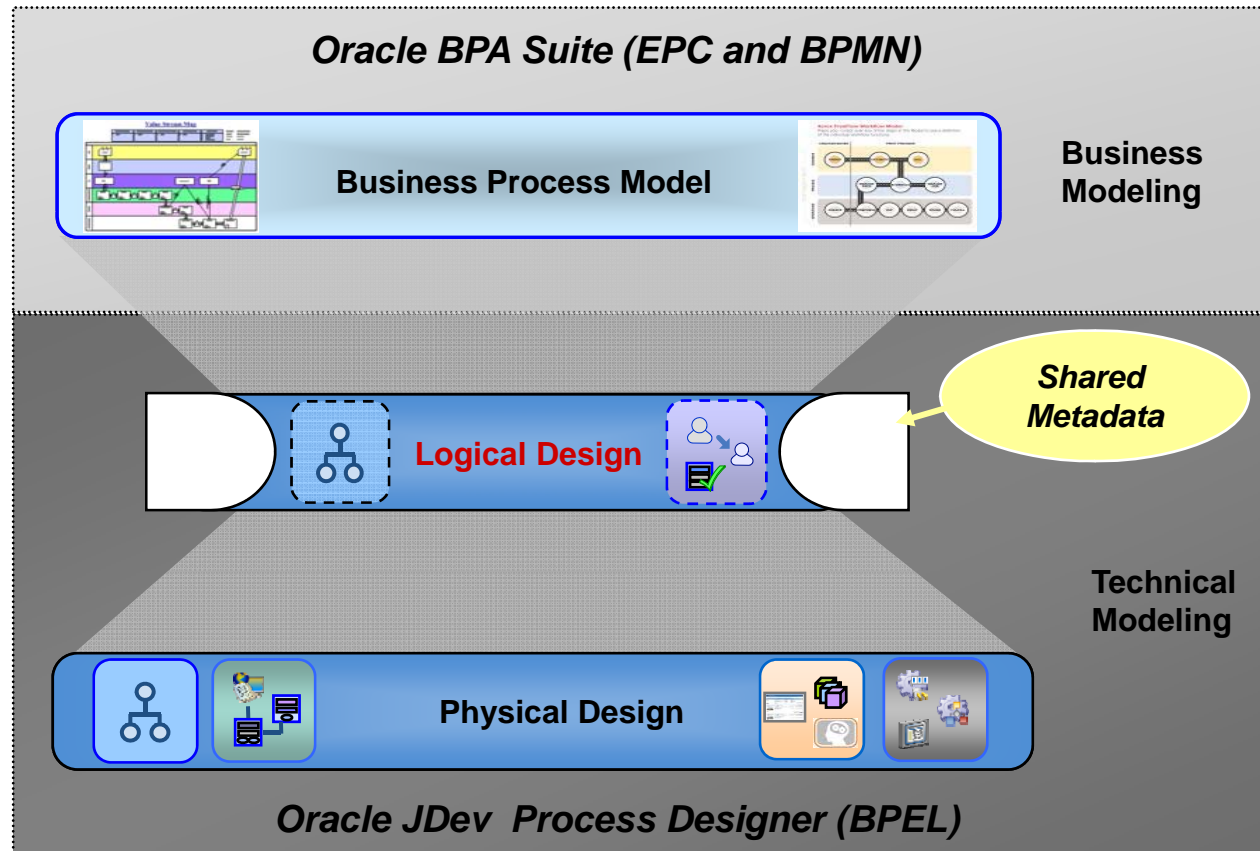


Business Processes Hierarchy

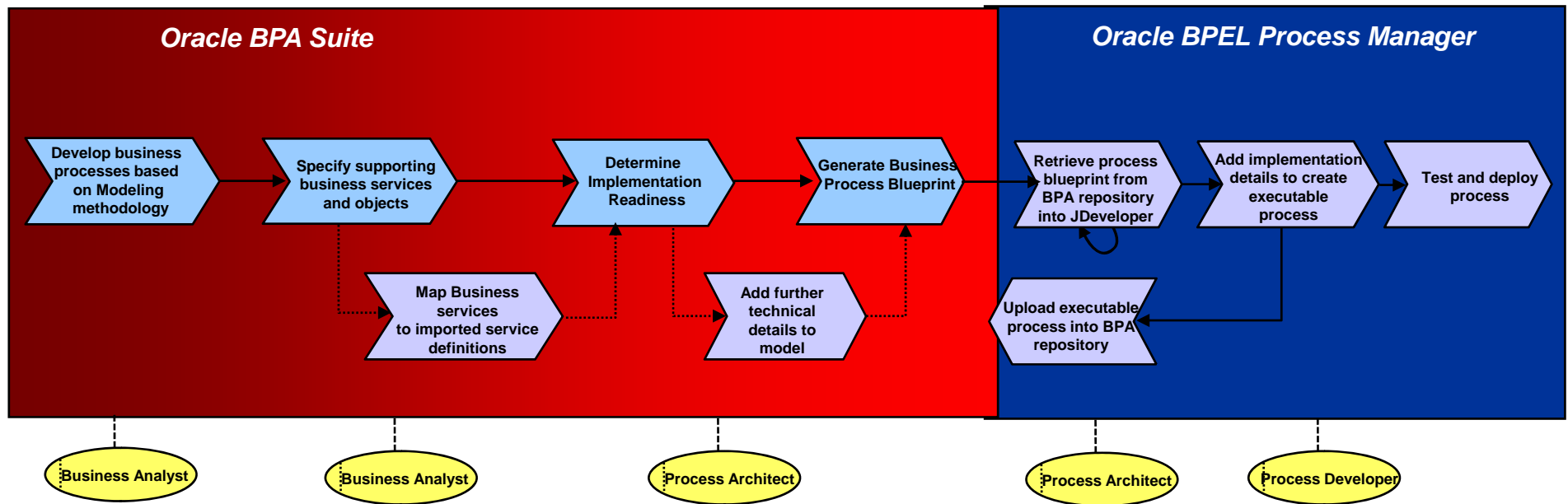


Business and Technical Modeling Alignment

Our Unique Approach - Right Levels of Abstraction

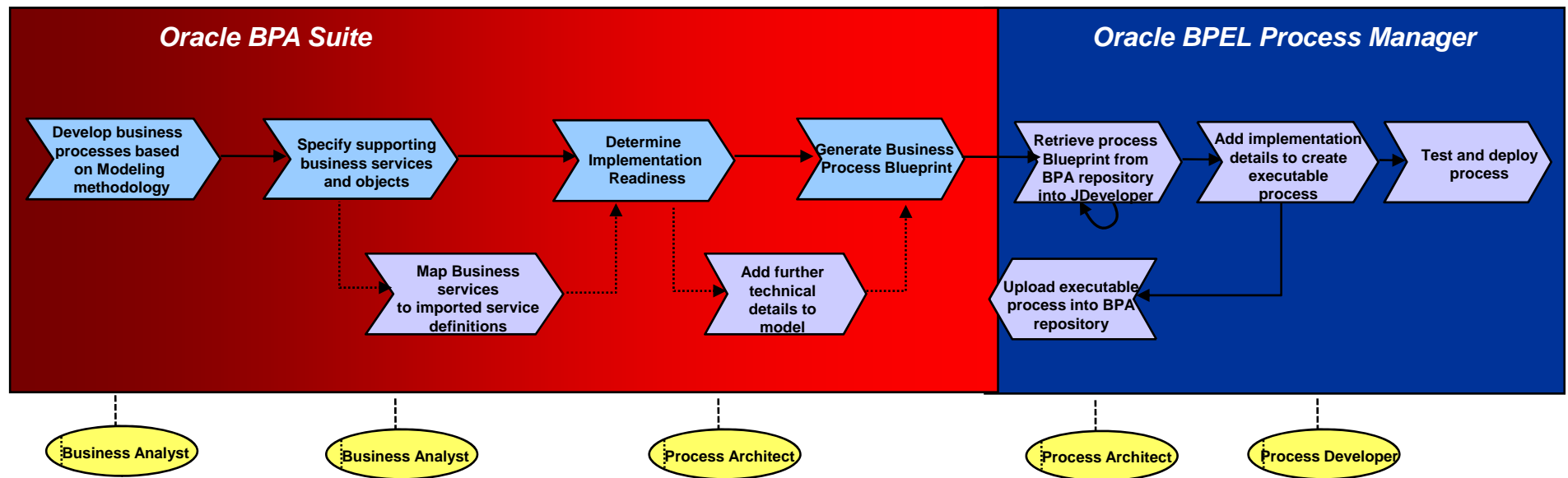


Active Process Modeling Methodology



Progressive Process refinement - from Business Process Definition To Execution

From Process Modeling to Execution



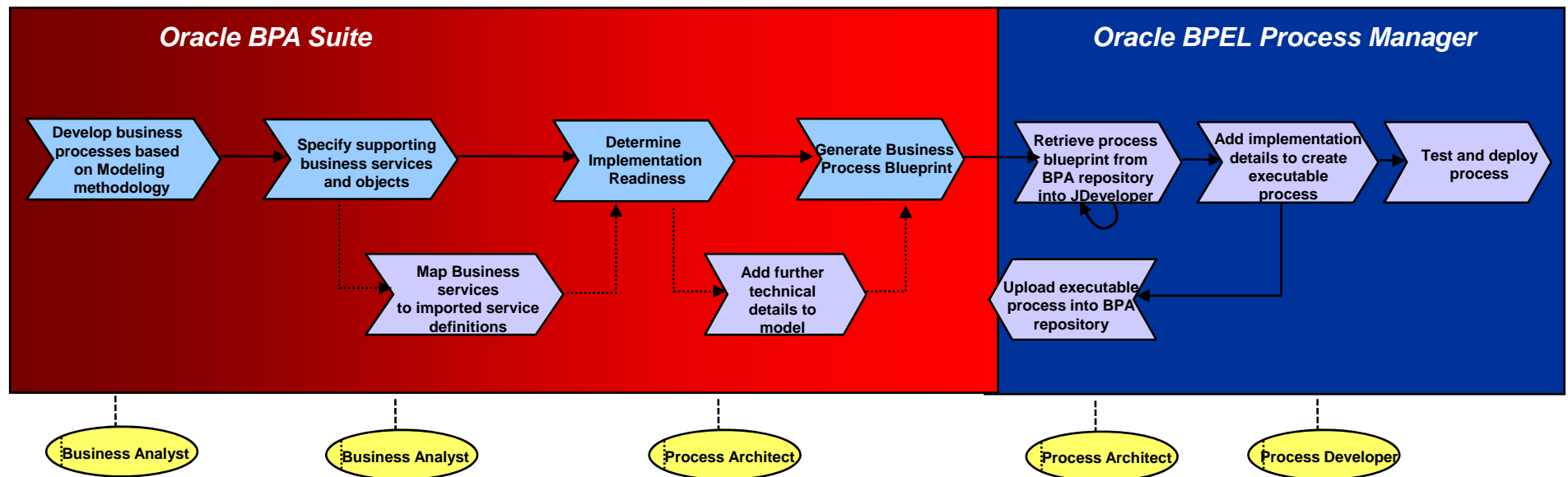
1. Business Analyst models business process

- Develop processes based on recommended modeling methodologies in Oracle BPA Suite (EPC/BPMN)

2. Analyst and/or Architect collaboration to ensure process models are ready for implementation

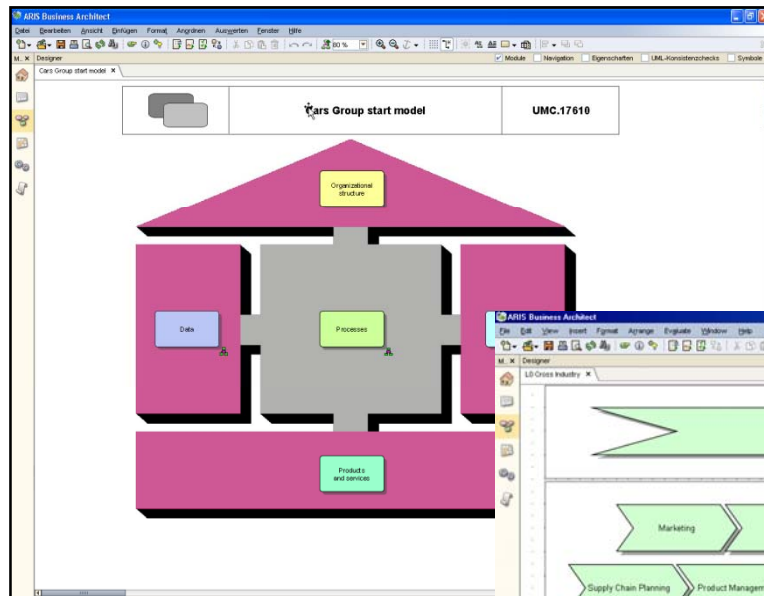
- Specify supporting business services and business objects based on identified requirements.
- Map business services to available imported service definitions. Add KPI definitions as appropriate (Optional)
- Determine implementation readiness by validating models for semantic accuracy
- Add more technical details after collaboration with process architect (Optional)
- Generate Business Process Implementation Blueprint from the process definition

From Process Modeling to Execution



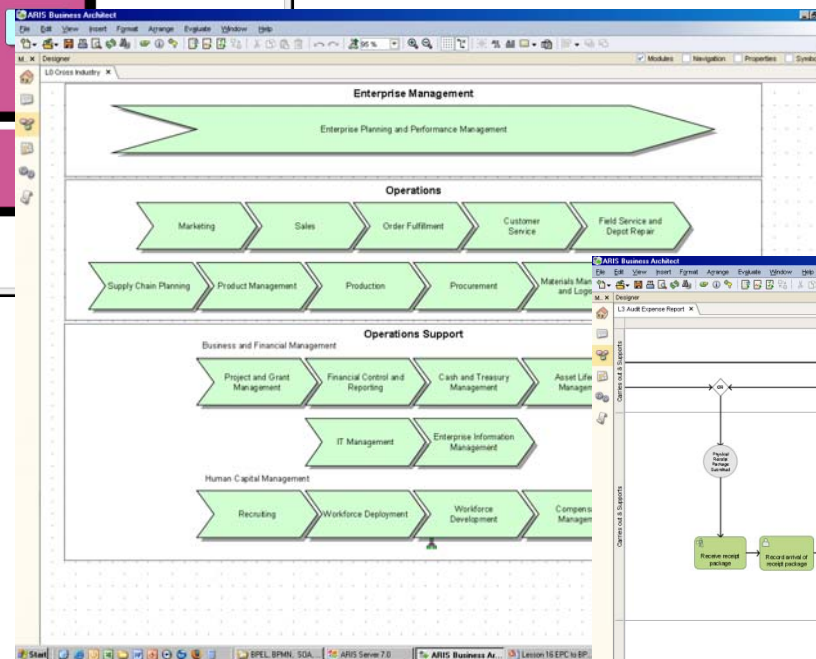
3. Process Architect and Developer implements executable process
 - a. Retrieve process blueprint from BPA repository into JDeveloper
 - b. Add implementation details to process and ensure it is executable
4. Test and deploy the process on the Oracle SOA Platform/BPEL Process Manager
5. Upload the implemented process to BPA repository so that business analyst has visibility to the implementation details, if needed.

1. Business Process Modeling

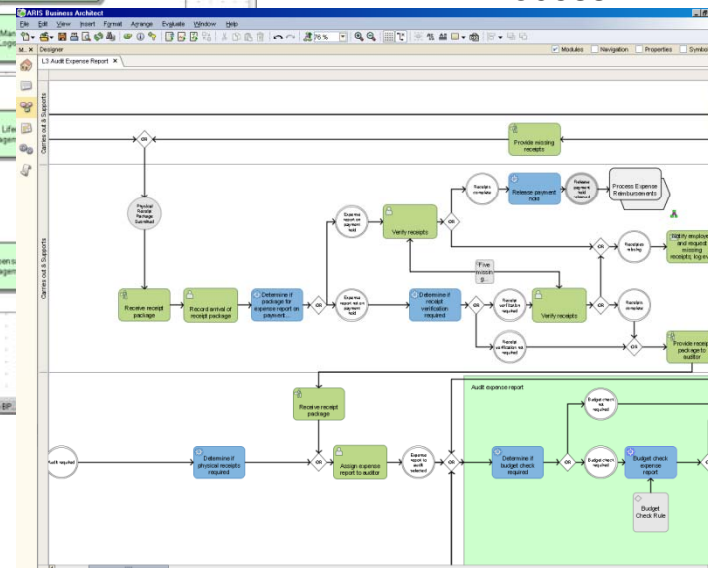


Organization BPM
Entry Model

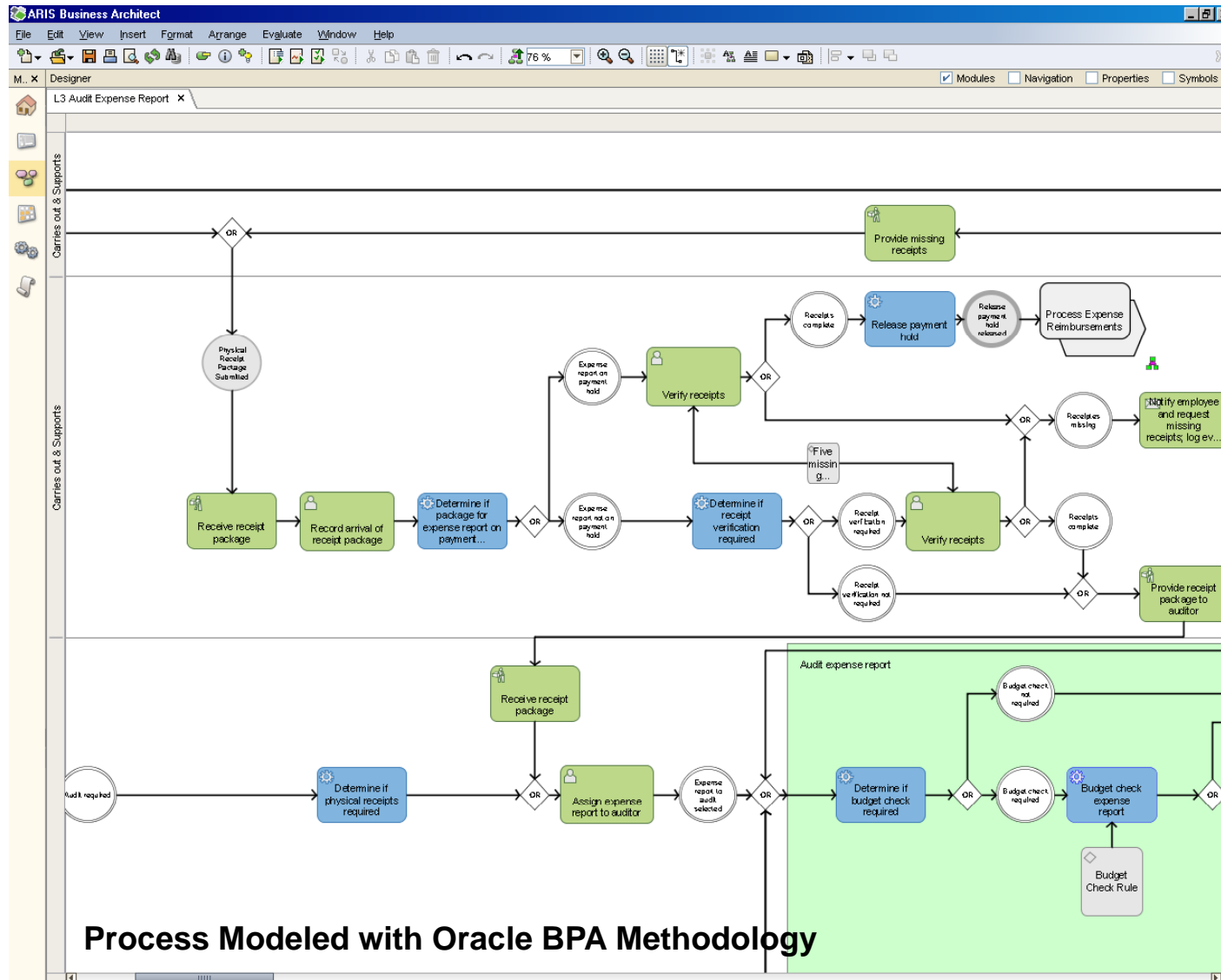
Organization
Processes
Overview



Service-Oriented
Process



1. Business Process Modeling (contd..)



1. Example – Human Task in Event Process Chain Type Model

Create Object - Human Task

Business View IT View

Standard Advanced

Human Task

Name *:

Documentation:

Priority *: medium

Expiration:

Assignees *: Single Approver; Assignee 1
Sequential List Of Approvers; Assignee 3, As

Notes: VP must approve after Manager

Owner: ... Delete

KPI

☐ Watch

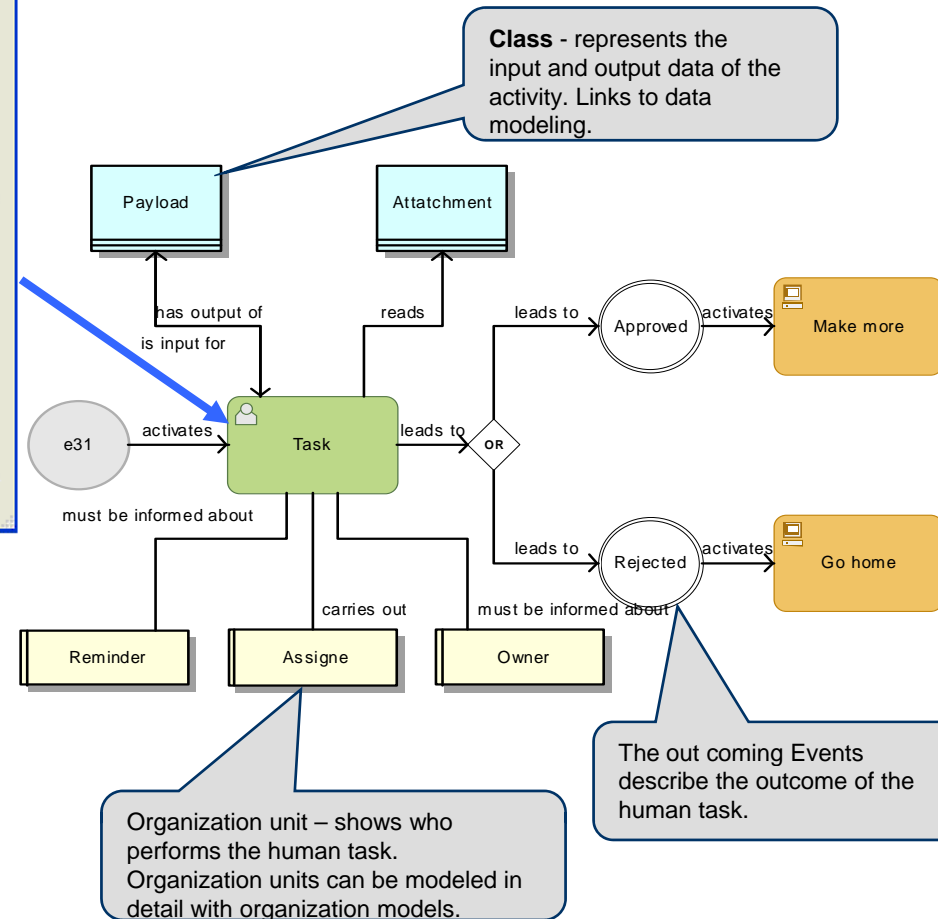
When To Watch: Please select...

What To Watch: Please select...

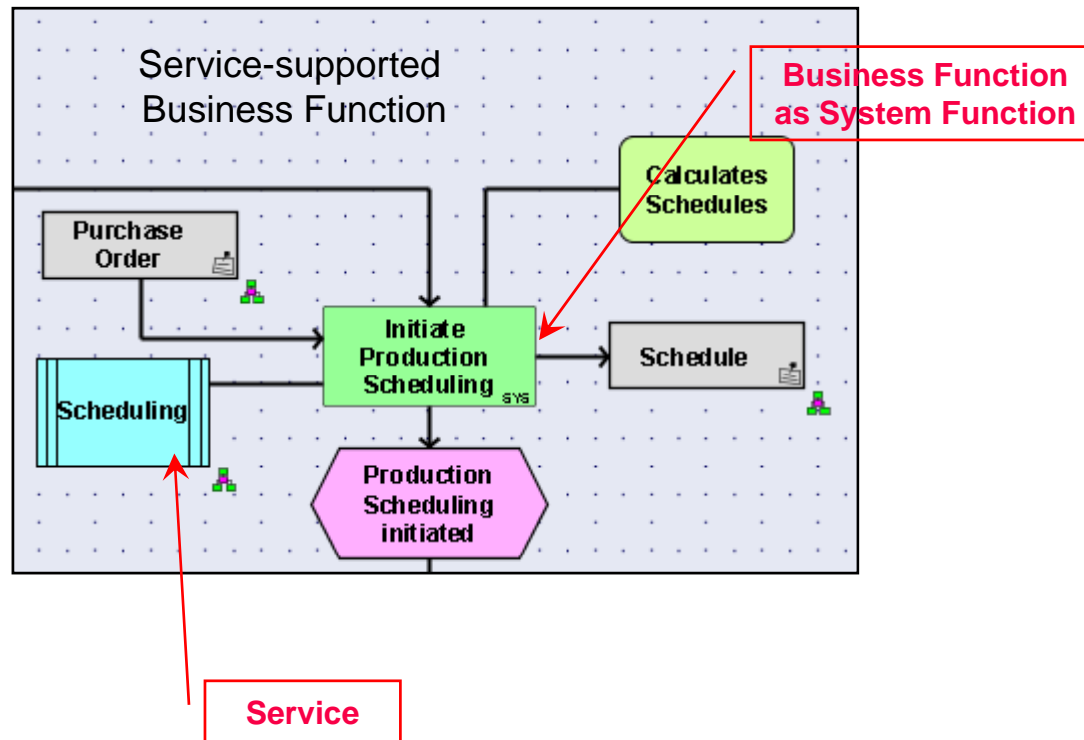
Action:

* mandatory field

Properties OK Cancel Remove Object Reset



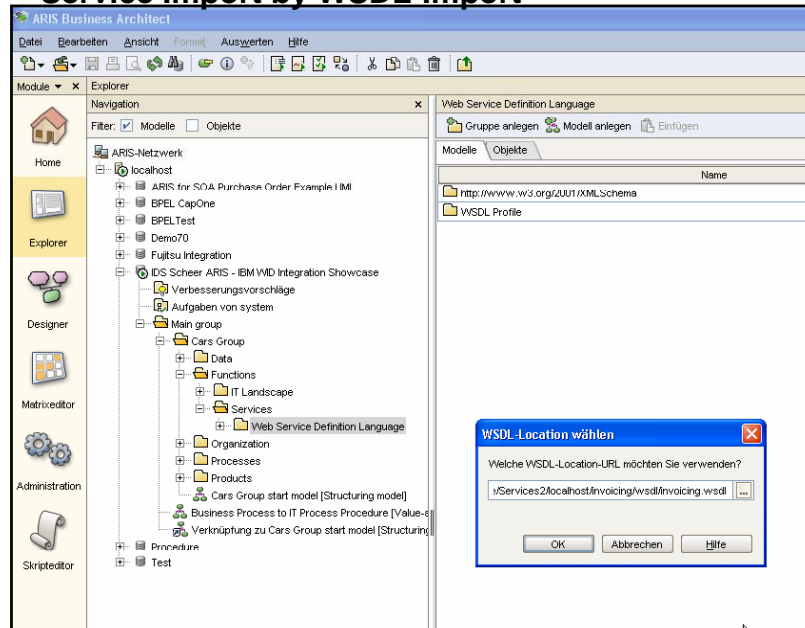
2a. Specify Supporting Services and Data



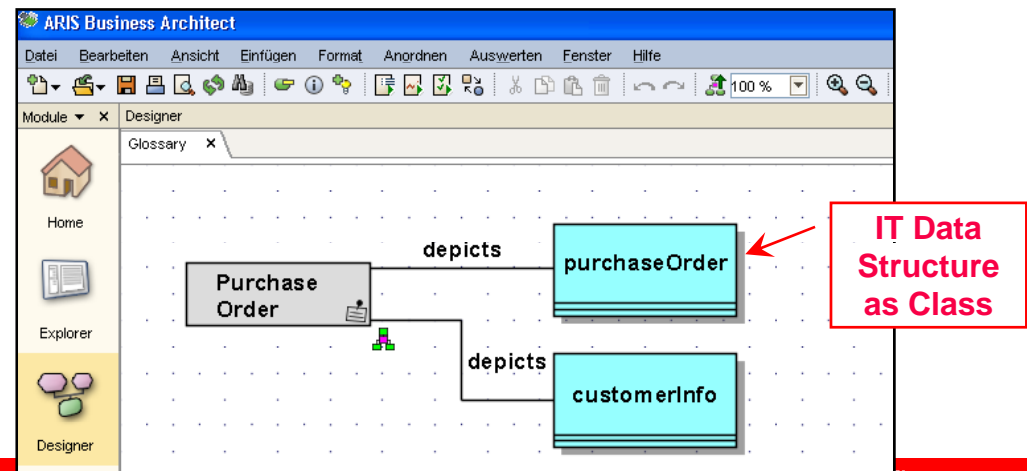
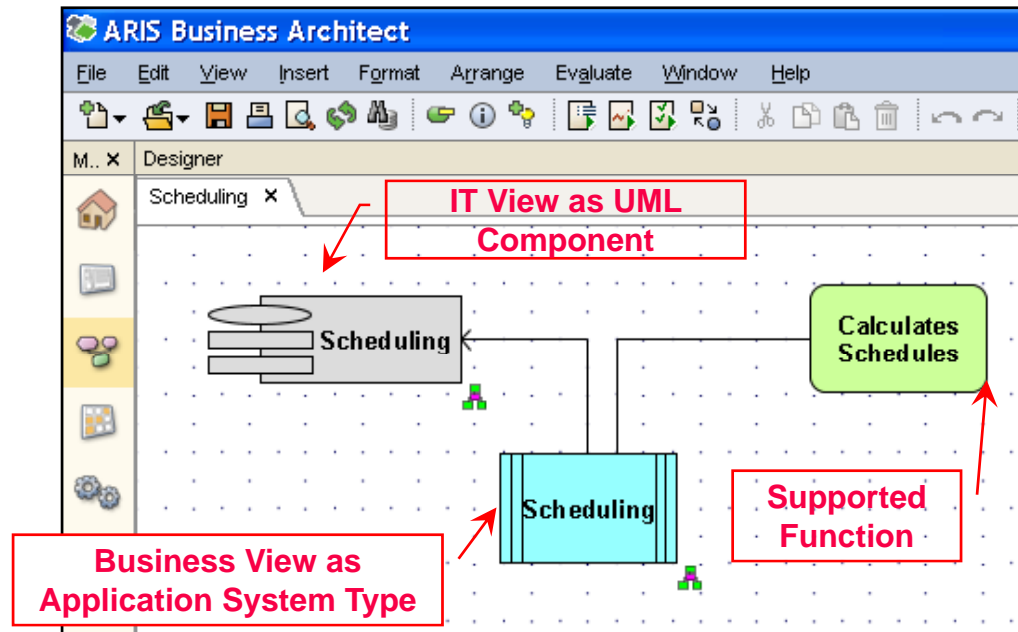
Mapping between Business Objects
and Technical terms

2b. Map Business Services to available imported service definitions

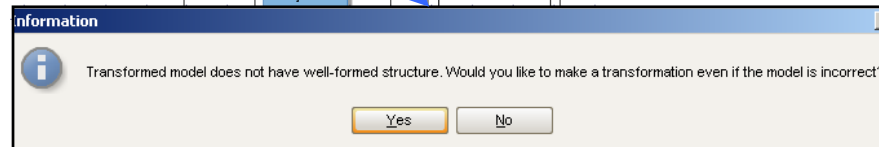
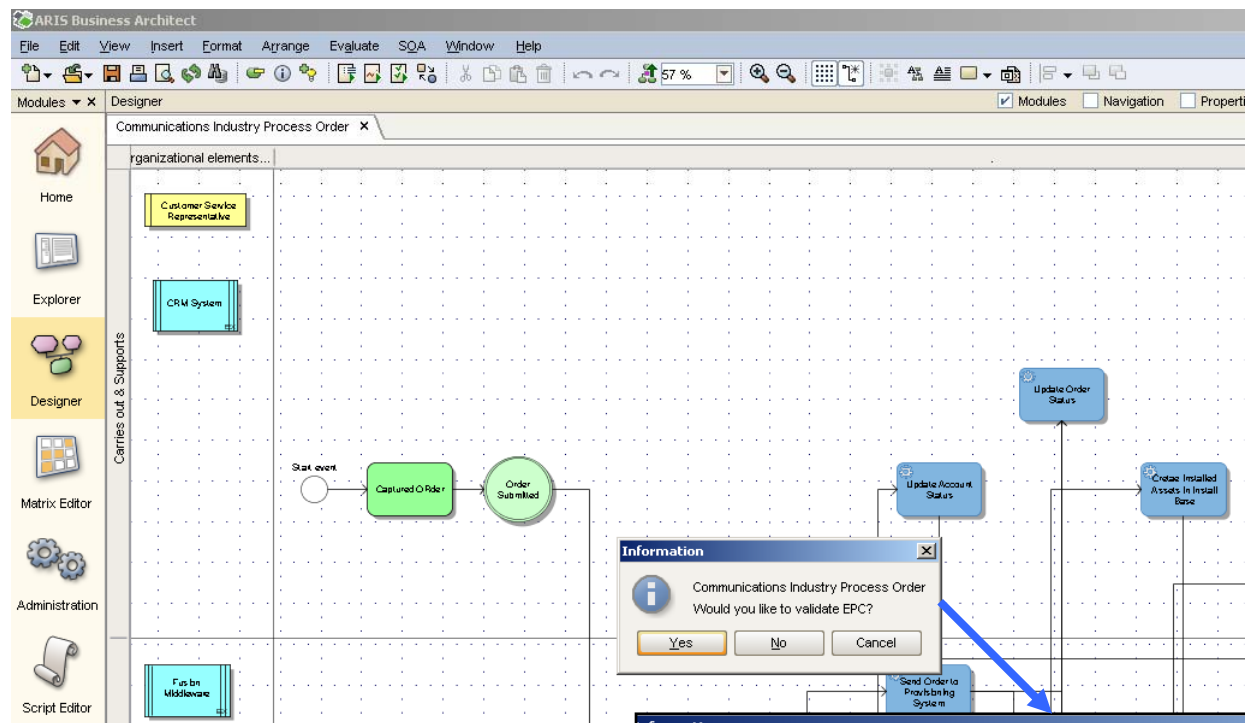
Service Import by WSDL-Import



Business and IT Views on Service



2c. Validate Implementation Readiness



ARIS Semantic Check
Service-oriented EPC validation

Structure rules

Rule: All functions/events have only one incoming/outgoing connection

Description: This rule checks whether all functions and events have a maximum of one incoming or outgoing connection.

The following functions and events have more than one incoming or outgoing connection:

Checked model	Object name	Object type
Communications Industry Process Order	End event	Event
	Send Order to Provisioning System	Function
	Update Order Status	Function

Rule: Each path must begin and end with an event

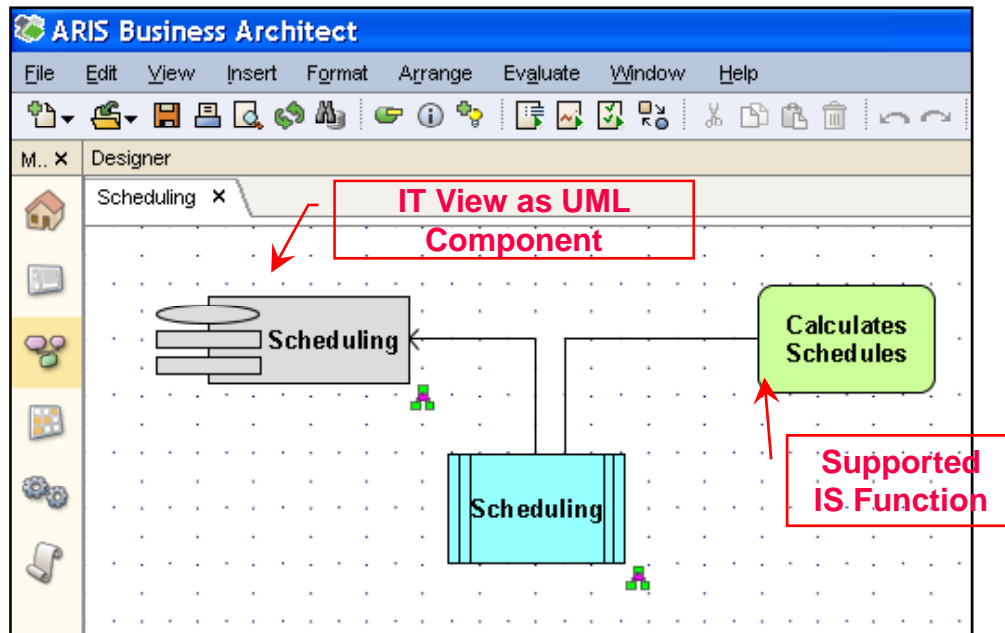
Description: This rule checks whether all paths begin and end with an event.

The following start or target objects are no events:

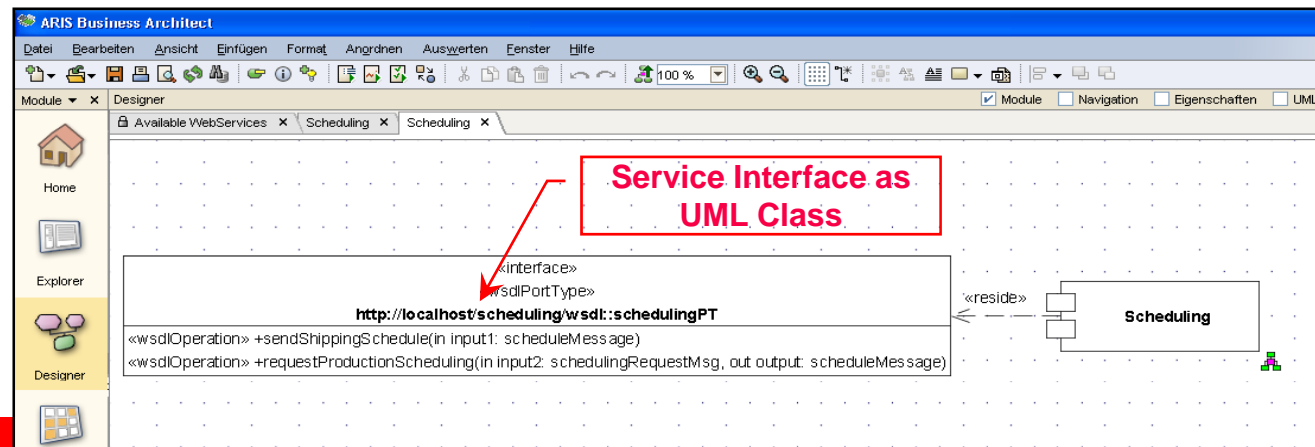
Checked model	Object name	Object type
Communications Industry Process Order	Capture order	Function
	Provide Service	Function
	Capture Order	Function
	Provide Service	Function

2d. Optionally Add more technical details

Business and IT Views on Service



Service UML Description

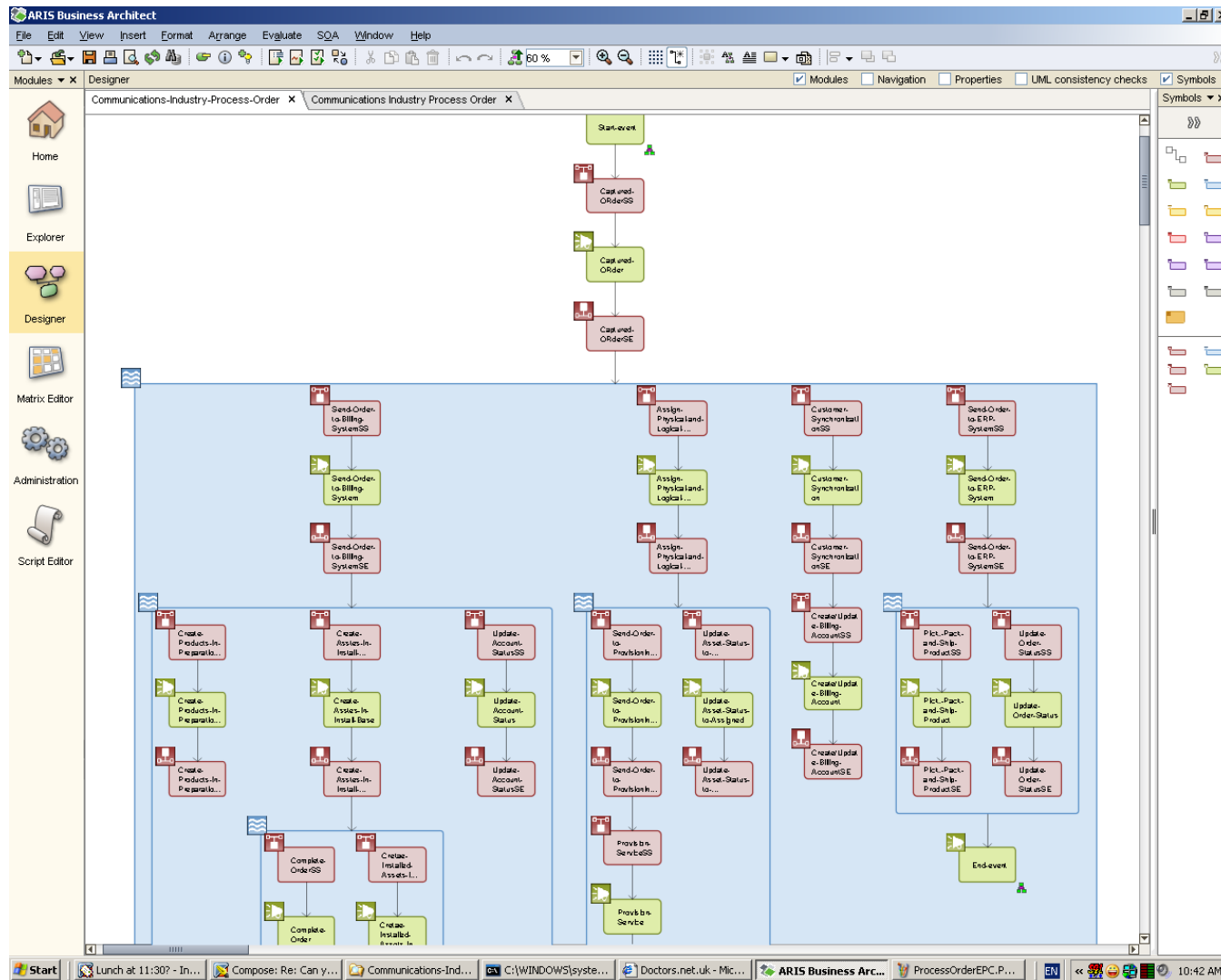




2e. Convert to Business Process Blueprint

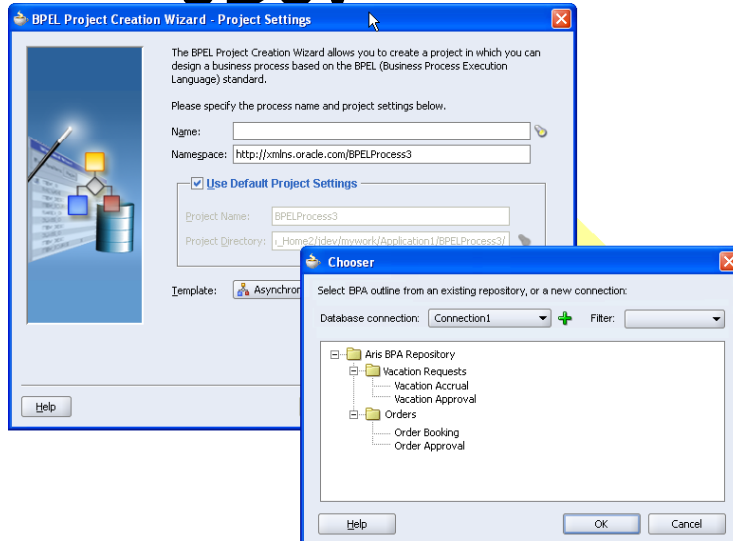
- Business Analyst can mark Process as “Ready for Implementation” when the process is ready for handoff to IT
- The EPC/BPMN model is converted to the corresponding “Process Blueprint” in the BPA Suite repository
- Later the developer can open these implementation ready processes in JDev and add implementation details

1

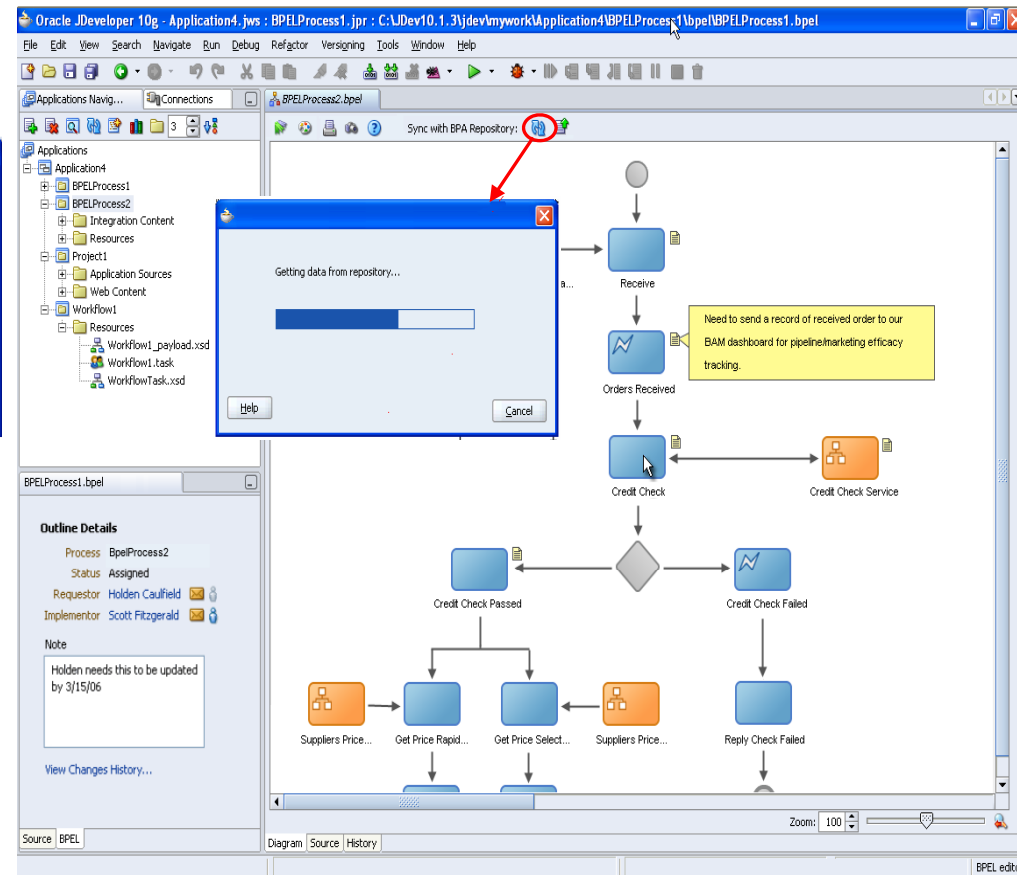


Process Blueprint in Business Process Architect

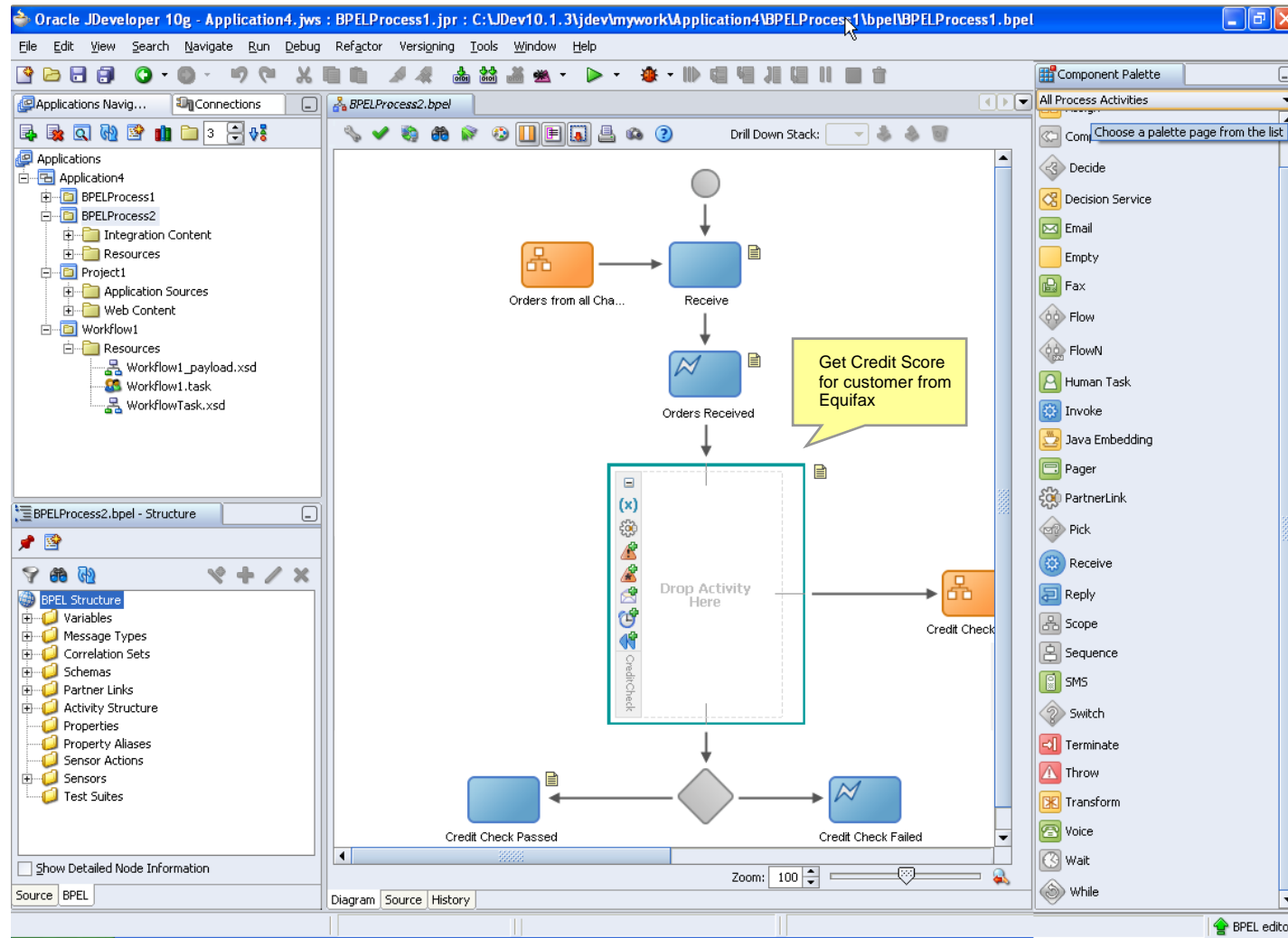
3a. Retrieve Business Process Blueprint in JDev



- Open Process blueprint from BPA repository
- As the Business Analyst changes process, the IT developer can get latest changes from BPA repository
- JDev will merge any changes from analyst that do not match current process.
- Any implementation details from IT will be preserved during merge

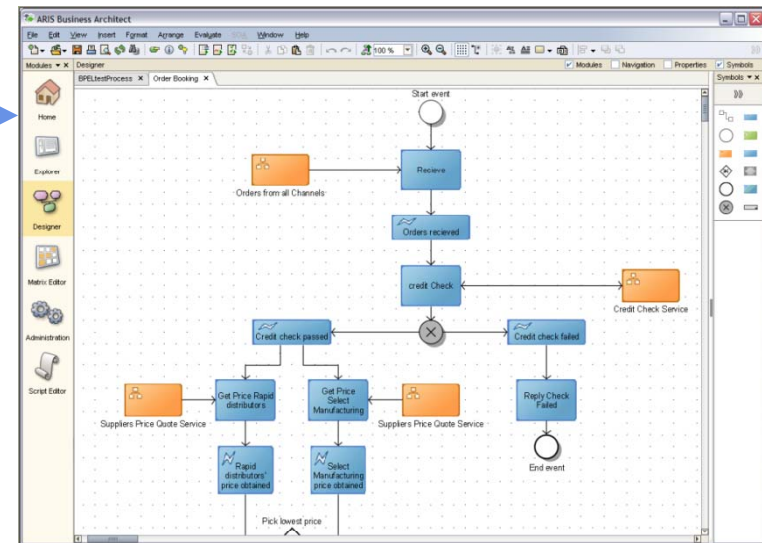
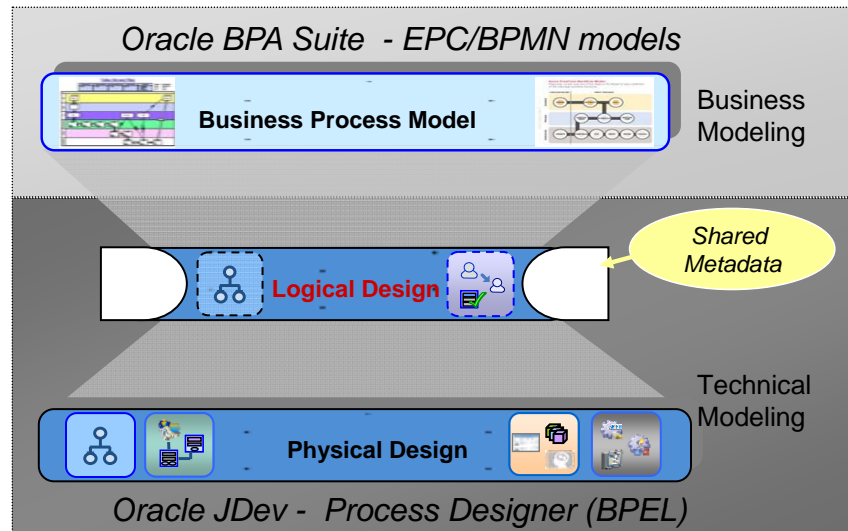


3b. Developer adds further implementation details



Process Models – Continuous Refinement

1. Business Process model



2. Process Blueprint (Logical Design)

3. Complete Executable Process

